

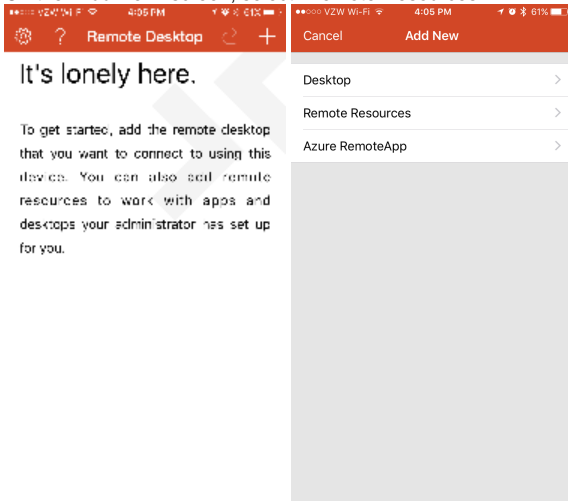
Use a Remote App on iOS

Need to access a remote application from an iOS device? Examples: Anki, Maple, SPSS 22, etc. Here's how.

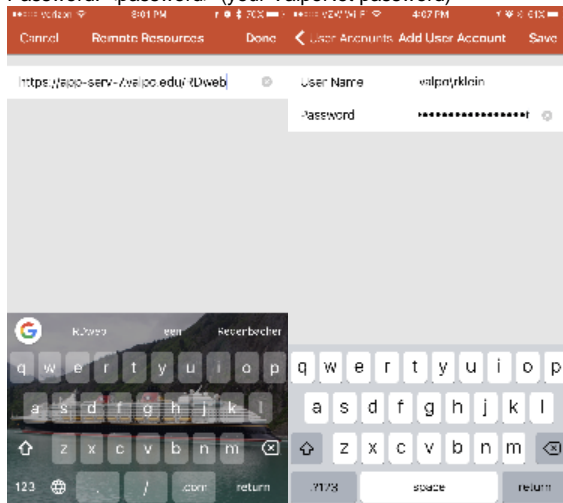
Step-by-step setup guide

You should only have to complete these steps once on each device you wish to use the app.

1. Download the [Microsoft Remote Desktop by Microsoft Corporation](#) app from the app store.
2. Once downloaded, open the application.
3. Tap the + (plus) button in the upper right corner.
4. On the "Add New" screen, select "Remote Resources."

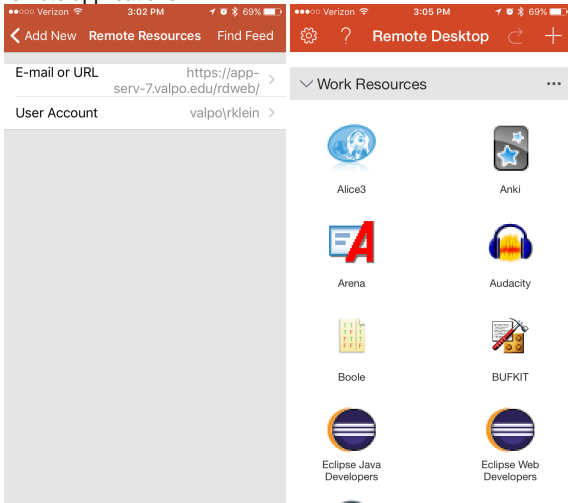


5. Enter the information for Valparaiso University's Remote Application servers.
 - a. URL: <https://app-serv-7.valpo.edu/RDweb>
 - b. User name: valpo\ - c. Password: <password> (your ValpoNet password)



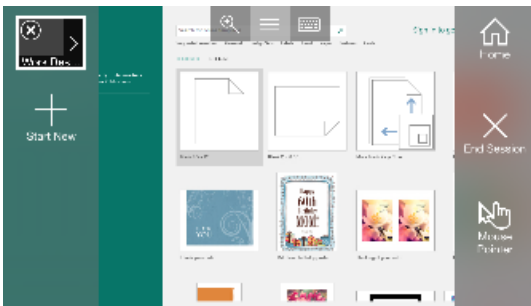
6. Tap "Find Feed"

7. If everything is correct, it should say "Preparing your resources." When it is down downloading, you should a list of the University's published remote applications.



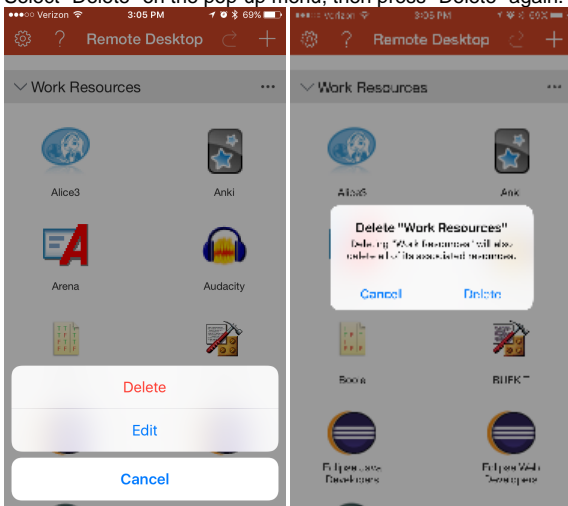
Use a remote app

To launch a remote app, press the icon for the application you want. The server will launch the app and you'll be ready to start working. When you're finished, press the "hamburger" icon at the top of the screen and select "End session."



Remove access

1. To remove the list of available remote apps, press the three dots next to "Work Resources."
2. Select "Delete" on the pop-up menu, then press "Delete" again.



Still need help?

For additional assistance, contact the [IT Help Desk](#).

Related articles

- [Request Leave in Self-Service Time Entry](#)
- [Input Time Worked in Self-Service Time Entry](#)
- [Approve Time Worked in Self-Service Time Entry](#)
- [Request Accommodations](#)
- [Approve a Student Request in Perceptive Content](#)