

# Use a Solstice Pod

Some rooms have been equipped with Solstice Pods to help facilitate presenting from a laptop or mobile device. Connecting is similar to the process used for Apple TV or Chromecast devices. Up to 4 devices can be connected to the Solstice at once for simultaneous sharing.

A list of rooms with Solstice technology is available: [Find a Solstice Equipped Room](#)

Make sure you've first connected your device to the secure campus wi-fi before attempting to connect to a Solstice Pod. **Guests without VU login credentials** will need to [connect to campus wi-fi](#) and go through the guest registration process before you can connect to the Pod.

The main screen for each Solstice Pod allows you to connect via either of two ways:

1. Use the [Solstice app](#) for your device. Visit this webpage for shortcuts to the appropriate app for your device: <https://www2.mersive.com/download/>
2. Use your [device's web browser](#) at the specified IP address. (This is basically a shortcut to the apps.)

After you disconnect, the app will remember previous connections in a list to make it easier to connect in the future. Just select it and enter the new key the next time you connect.

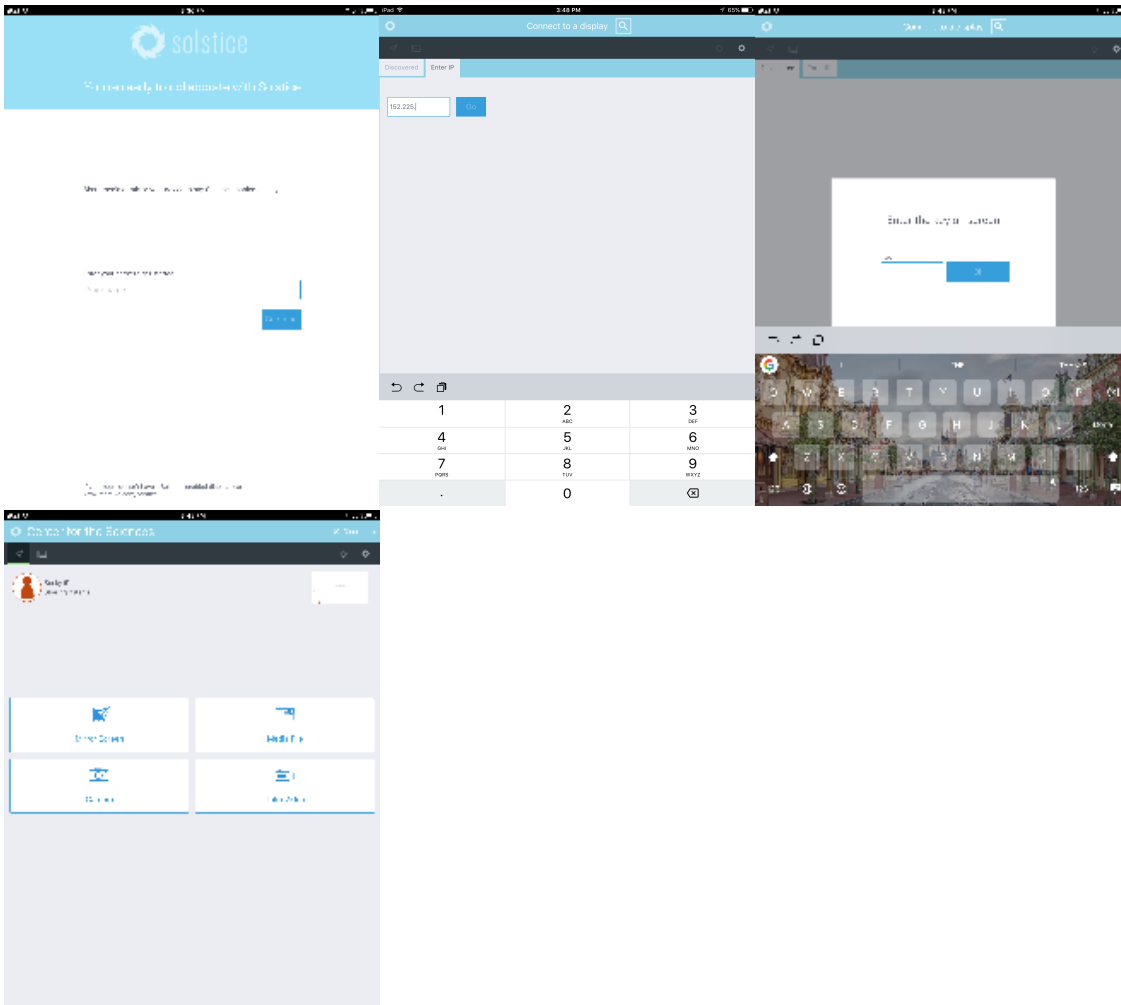
Want to view the session remotely? The meeting organizer should share the web address (ex. 152.228.xx.xxx) with the viewer. Then the viewer should launch the Solstice app, and select Meeting -> Remote View.

Meeting Options:

- Multi-room functionality - Join two pods together. (overflow spaces)
- Moderated = no one can join the session unless you approve it.
- Password-protected = the organizer provides the password to only those they want to join the session.

## Step-by-step guide - Solstice App

1. First, download and install the Solstice app. Apps can be downloaded from your device's app store or here: <https://www2.mersive.com/download/>
2. Once installed, open the app.
3. Select a name for your device. (ex. John's iPhone)
4. Type in the IP address (ex. 152.228.xx.xxx) and the 4-character key displayed on the Solstice screen.



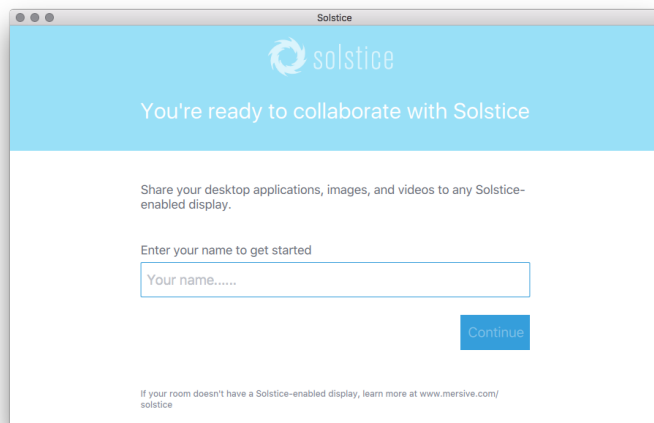
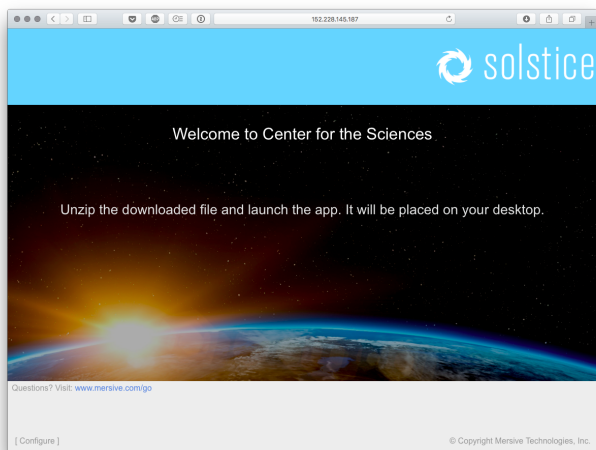
5. See the "Now what?" section below for more about functionality.

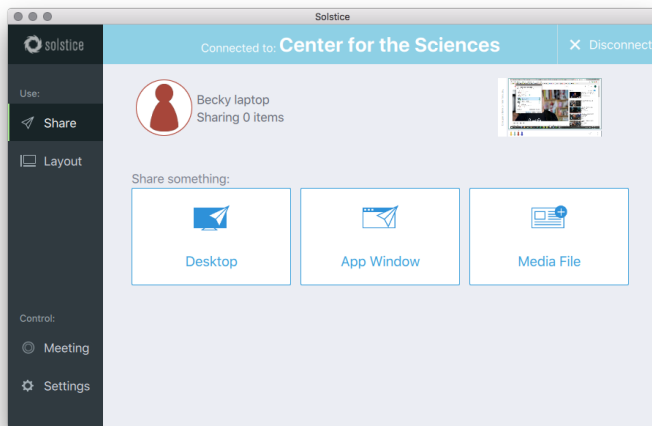
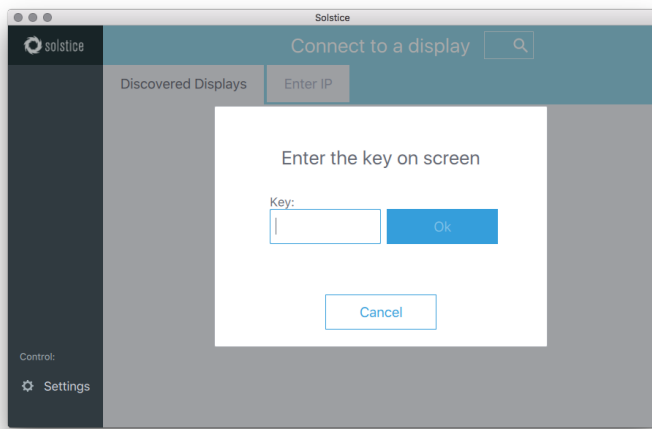
### Apple Device Users

Connect via AirPlay to the Pod with the 4 digit meeting key.

## Step-by-step guide - Your Device's Browser

1. Open the browser and type the specified IP address in the address field (ex. 152.228.xx.xxx).
2. When prompted, download and install the app.
3. Open the app.
4. Select a name for your device. (ex. Becky's laptop)
5. Type in the 4-character key displayed on the Solstice screen.





6. See the ["Now what?" section](#) below for more about functionality.

#### Apple Device Users

Connect via [AirPlay](#) to the Pod with the 4 digit meeting key.

## I'm Connected - Now What?

- If you wish to share your whole desktop, select "Desktop." If you just want to share a specific app window or browser tab, open it and then select "App Window" and navigate to your app/browser.
- If connecting with an Apple device you will need to connect to the pod and then connect via AirPlay to be able to share audio. If you just wish to share your desktop you may still do so without shared audio.
- If you'd like to upload media files you can do so through the "Media file" option (i.e. multiple image/video files). There is no limit on the number of files you can share.
- Once things are displayed on the screen you can "dock" them to the left in the dark "on-deck" bar. This allows you to keep the viewing screen more manageable if you have multiple items displayed. This can be done in the layout section of the app.

#### Known Issues

1. Certain apps may not work due to DRM & HDCP protections (such as Netflix, YouTube, Amazon Video, HBONow, Hulu, etc.). This is a copyright protection issue beyond IT's control. Many YouTube videos will work, as long as they don't contain copyrighted material.
2. Android mobile devices currently cannot share audio with the display screen. Solstice is working on a fix.
3. **Remember to disconnect from AirPlay as well as the pod when you are done.**



Still need help?

For additional assistance, contact the [IT Help Desk](#).

## Related articles

- [FAQ - WebEx](#)
- [Use the SPSS 25 Remote App Via Mac](#)
- [Microsoft Remote Desktop Connection](#)
- [Use a Remote App on iOS](#)
- [Connect Network Drives on a PC](#)